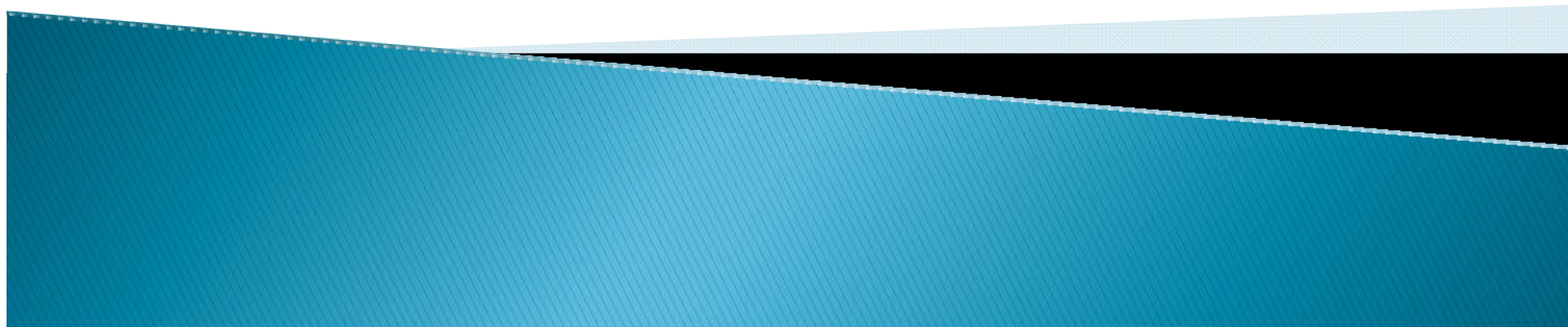




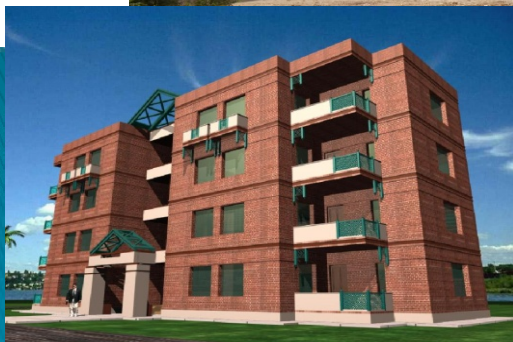
***In the Name of Allah, Most Beneficent,
Most Merciful***





1st INTERNATIONAL STEEL ROAD SUMMIT, ISTANBUL SEPTEMBER 8-9 , 2011

BRIEFING OF PAKISTAN DELEGATION



SEQUENCE



- ▶ Pakistan
- ▶ M/o Housing & Works
- ▶ Implementing Arms
- ▶ Role of Government in housing development
- ▶ Steel Industry of Pakistan – An Overview
- ▶ Steel products
- ▶ Opportunities



PAKISTAN




Source: <http://geology.com/world/pakistan-satellite-image.shtml>

PAKISTAN

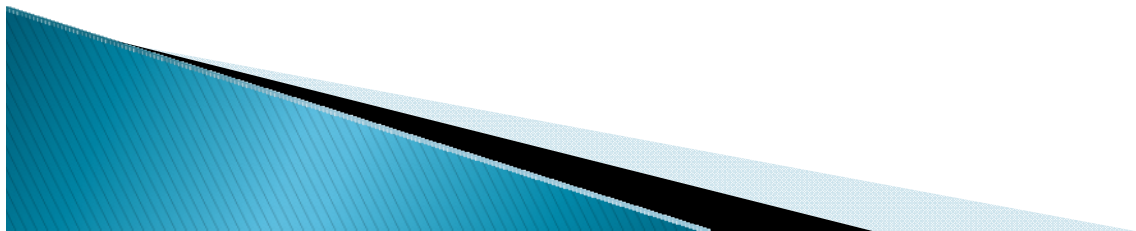
Capital	Islamabad	Total area	803,940 Km ²
Largest city	Karachi	Population (2010)	170.29 Million
Official language(s)	Urdu & English	GDP (PPP) (2010)	
Regional Languages	Punjabi, Pashto, Sindhi, Seraiki and Balochi	Total	US\$451.97 billion
Nationality	Pakistani	Per capita	US\$2,731
Government	Federal Parliamentary Republic	Currency	Pak Rupee (Rs.)
		National Flower	Jasmine
		Religion	Islam
		Literacy rate	53%

MINISTRY OF HOUSING & WORKS

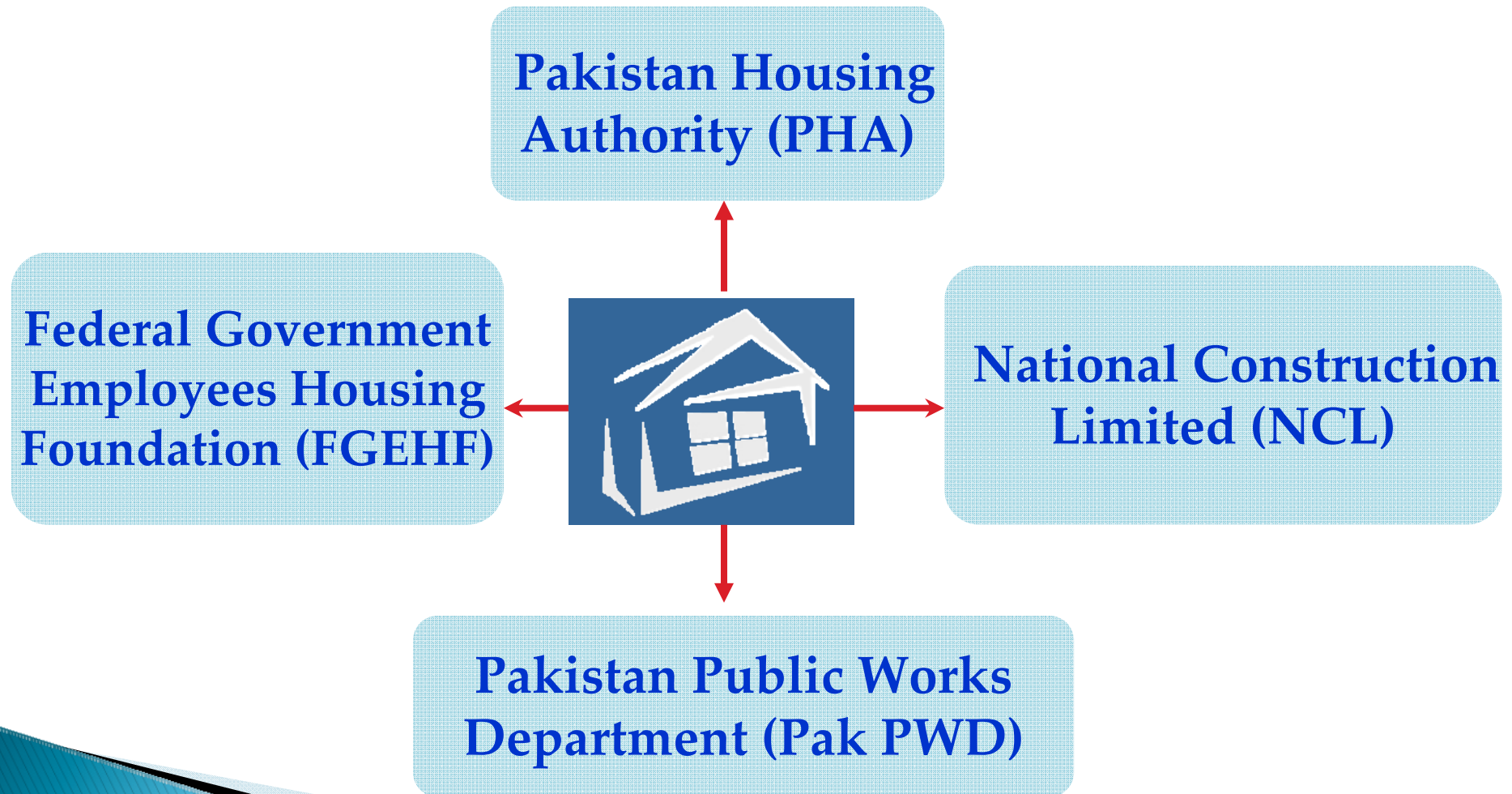
As per Rules of Business 1973, Ministry of Housing and Works is responsible to carry out following major functions:

1. Acquisition and development of sites, construction, furnishing and maintenance of Federal Government Buildings
 2. Coordination of Civil Works Budget
 3. Execution of Federal Government works
 4. Provision of Government owned office accommodation and residential accommodation for officers and staff of the Federal Government
 5. Management of Federal Lodges
- 

6. Land and buildings belonging to the Federation wherever situated, and revenues derived there from
7. Matters relating to the Federal Government Land licenses to various Cooperative Housing Societies in Karachi, except those under the Defence Division
8. National Housing Policy



IMPLEMENTING ARMS



ROLE OF GOVERNMENT IN HOUSING DEVELOPMENT

LAND & INFRASTRUCTURE

- Creation of Land Bank
- Facilitate provision of utilities
- Development of basic infrastructure
- Regulate housing development
- Policy making for bridging the gap between demand & supply

CONSTRUCTION

- Incentives for local & foreign developers / investors
- Setting minimum quality & design guidelines
- Multi-model housing commensurate with cultural values and eco-systems.
- Linking construction of housing facilities with financial market

STEEL INDUSTRY OF PAKISTAN

OVERVIEW



STEEL INDUSTRY OF PAKISTAN

- ▶ Pakistan's installed production capacity is estimated to be around **6.25 million tons per annum** with capacity utilization averaging about 45% of the installed. Within the total installed capacity, the capacity for long products stands at around 4 Million tons and the rest for flat and household items.
- ▶ The following four major accounts for the installed capacity
 - ❖ Pakistan Steel Mills
 - ❖ Steel Melters
 - ❖ Ship breaking industry
 - ❖ Import of Rollable Material/ Billets



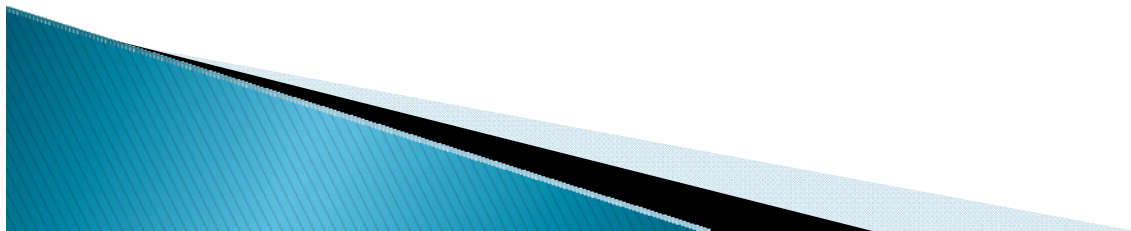
STEEL INDUSTRY OF PAKISTAN

PAKISTAN STEEL MILLS

- ❖ Installed capacity of 1.1 million tons per year
- ❖ Only integrated steel plant using iron ore

STEEL MELTERS

- ❖ 200 units operating in mild steel production segment
- ❖ Steel Scrap is melted in Electric Arc Furnaces and Induction Furnaces
- ❖ Total installed capacity of these units is 6.25 million tons per year



STEEL INDUSTRY OF PAKISTAN

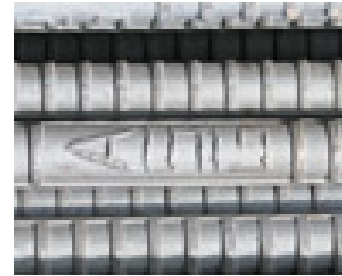
PRODUCTS



WIRE RODS



TOR BARS



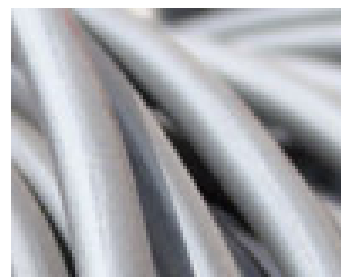
**DEFORMED
BARS**



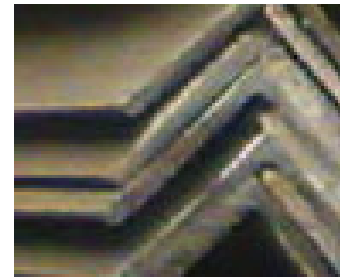
**BAILING
HOOPS**



SHAFTS



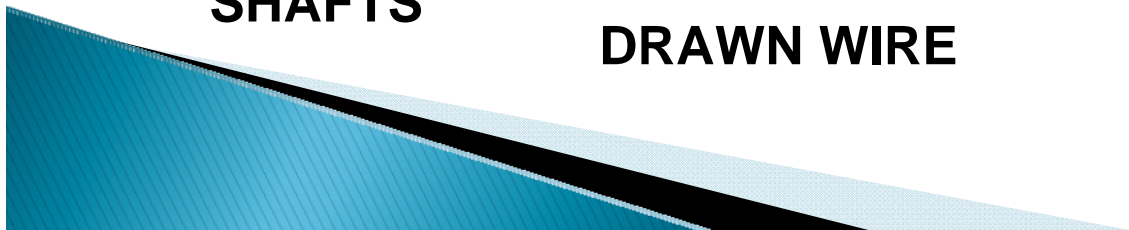
**COLD
DRAWN WIRE**



ANGLE




CHANNELS




STEEL INDUSTRY OF PAKISTAN

OPPORTUNITIES

- ▶ Pakistan's per capita consumption of steel is only **21.7 per cent** of the global average, indicating huge potential for growth
 - ▶ Most countries have per capita consumption of around 175 kg of steel every year whereas Pakistanis consume only 38 kg.
 - ▶ Considering a very modest increase in per capita steel consumption to 80 kg over the next 10 years, the steel requirement works out to be **16 million tons per annum** for a population of around 200 million by the year **2020**
- 

STEEL INDUSTRY OF PAKISTAN

OPPORTUNITIES

- ▶ **Non-availability of ample raw material, as huge volume of the iron ore requirement is met by exports**
 - ▶ **After earthquake of Oct-2005, building codes have been updated and creating an increase in use of structural steel**
 - ▶ **Focus of the Government on development of housing facilities for low income groups etc.**
 - ▶ **High rise building construction trends necessitate the use of modern steel products**
- 

THANK YOU

